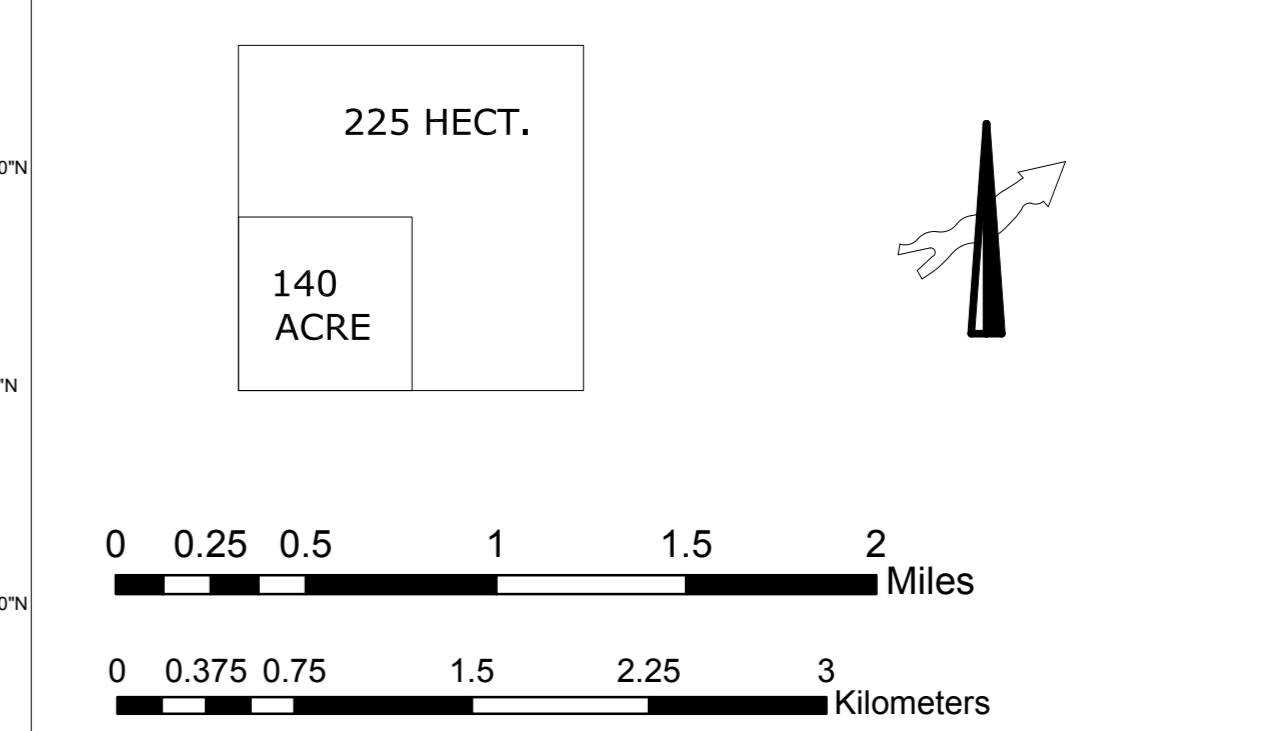


KOTA कोटा LAND USE PLAN 2031 भू उपयोग योजना. 2031

- LEGEND**
- LANDUSES**
- RESIDENTIAL** आवासीय
 - LOW DENSITY RESIDENTIAL 50 TO 100 PERSONS PER ACRE
 - MEDIUM DENSITY RESIDENTIAL 101 TO 150 PERSONS PER ACRE
 - HIGH DENSITY RESIDENTIAL 151 TO 200 PERSONS PER ACRE
 - VERY HIGH DENSITY RESIDENTIAL ABOVE 200 PERSONS PER ACRE
 - COMMERCIAL** वाणिज्यिक
 - RETAIL BUSINESS AND GENERAL COMMERCIAL/HOTEL/PP
 - DISTRICT CENTER / SUB CITY CENTER
 - WHOLESALE BUSINESS
 - WARE HOUSING AND GODOWNS
 - MIXED LANDUSE** मिश्रित उपयोग
 - MIXED USE
 - INDUSTRIAL** औद्योगिक
 - LARGE AND EXTENSIVE
 - SMALL AND MEDIUM
 - GOVERNMENTAL** सरकारी
 - GOVERNMENT AND SEMI GOVERNMENT OFFICE
 - GOVERNMENT RESERVED
 - RECREATIONAL** आनंद प्रमोद
 - PARK/OPEN SPACE/PLAY GROUND / STADIUMS
 - TOURISM** पर्यटन
 - FAIR / TOURISM FACILITY
 - PUBLIC AND SEMI - PUBLIC** सार्वजनिक एवं अर्ध सार्वजनिक
 - UNIVERSITY
 - COLLEGE
 - SPECIAL/PROFESSIONAL/RESEARCH AND OTHER INSTITUTION
 - SECONDARY (S) / SENIOR SECONDARY SCHOOL (SS)
 - GENERAL HOSPITAL / DISPENSARY / AYURVEDIC HOSPITAL
 - VETERINARY HOSPITAL
 - HISTORICAL/SOCIAL/CULTURAL
 - OTHER COMMUNITY FACILITIES
 - PUBLIC UTILITIES
 - FACILITY AREA
 - CREMATION / BURIAL GROUND
 - AGRICULTURAL** कृषि
 - NURSERY / ORCHARD
 - POLTRY OR DAIRY FARM/ GAUSHALA
 - PLANTATION
 - HIGHWAY / OTHER DEVELOPMENT CONTROL AREA
 - SPECIAL AREA / RES DEVELOPMENT AREA
 - PERIPHERAL CONTROL BELT
 - CIRCULATION** परिवहन
 - BUS STAND (B.T.) / TRUCK TERMINUS (T.T.)
 - AIR PORT
 - ROADS** सड़कें
 - EXISTING ROADS
 - RIGHT OF WAY
 - PROPOSED ROAD

APPROVED BY GOVERNMENT VIDE NOTIFICATION NO. प.10(3)नविधि / 3 / 80 पार्ट-II जयपुर, DATED 11.01.2022



उप नगर नियोजक कोटा जोन, कोटा

वरिष्ठ नगर नियोजक नगर विकास न्यास, कोटा

अतिरिक्त मुख्य नगर नियोजक (सूद) राजस्थान, जयपुर

मुख्य नगर नियोजक राजस्थान, जयपुर

